

# Grand Amaya

Terrace Floor Plan



— FIND THE PRIDE OF LUXURY —

— 4 BHK LUXURIOUS APARTMENTS —









## HOW'S LIFE IN A 4 BHK?

It's Luxurious  
It's free from chaos  
It's spacious  
It's happening  
It's stress-free  
It's one of a kind

**BECAUSE IT'S GRAND AMAYA!**





## Apartment Features

1. 4 BHK Fully Furnished Luxurious Flats.
2. Prime & Peace full location of Nirman Nagar (Rail Nagar)
3. Near By Mansarovar Metro Station
4. Reserved Car Parking For Each Flats.
5. Rera Approved.
6. Lift 8 person
7. Power Backup (Silent DG Set ) For Common Area / 1 Kilowatts per Flats
8. Three Face Electric Wiring In Complete Flats (Havells)
9. VRV Central Air Conditioning System(Daikin) In Drawing Hall/Dining Hall/All Bedrooms
10. Approved By JDA Jaipur
11. Internal Wall & Ceiling Paint By Asian Royale Paint
12. Gymnasium
13. 24 Hours Water Supply With Borewell
14. CCTV At Main Gate, Lobby and Common Area
15. Aluminum Gate & Window With Glass & Wire Mesh Doors.
16. Digital Big Size Tile In Floor / Marbal in Drawing Hall / Dining Hall
17. Beautiful Designed Interiors
18. Vastu Friendly
19. Building Designed As Par Eco Friendly Big Windows For Better Air Light & Cross Ventilation
20. EPBX Systems(Intercome System) For Each Flats
21. Well Managed Security Service
22. Well Designed Entrance Lobby and Lift Lobby On All Floor With Designed Flooring.







Grand Amaya  
— FIND THE PRIDE OF LUXURY —

## Experience A Vibrant Lifestyle

Dwelve into the vibe of luxury living wrapped with effulgence of elegance. Devour the pure essence of comfort and leisure at its best. An embodiment that defines the opulence with astounding infra and alluring amenities. Reside amid the most secure gated community, and stroll worry-free around every corner of the project. We know secured services and a safer neighborhood is of paramount importance, that's why your safety is our topmost priority.



Exclusive **AMENITIES**  
Designed For You!



Rooftop Garden



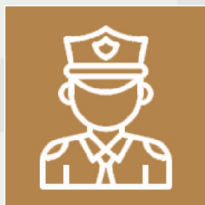
2 Lifts



Covered Parking



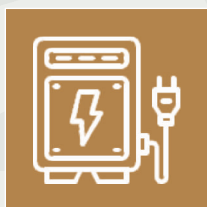
Indoor GYM



Guard Room



Gas Banking



Power Backup



Kid's Play Area



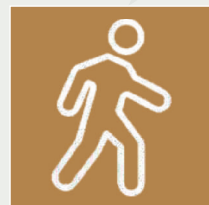
CCTV Camera



Designer Lobby



Servant Room



Walking Track  
on Roof







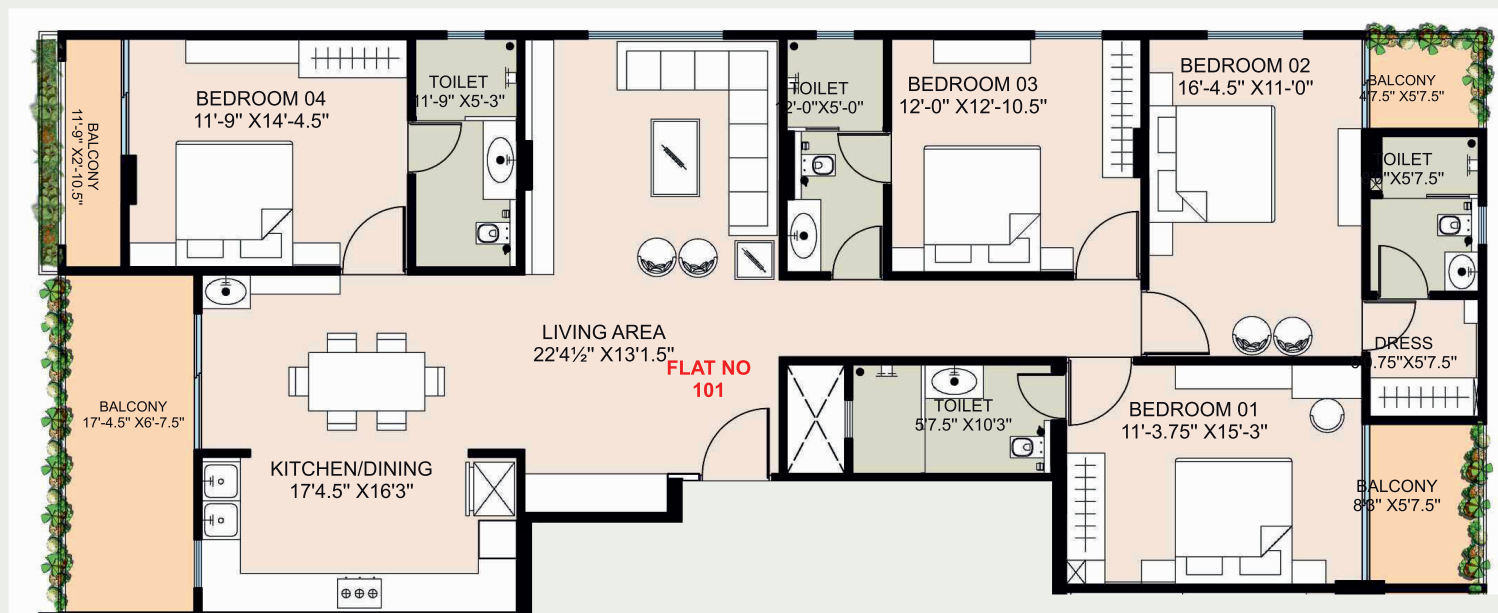
Typical Floor Plan



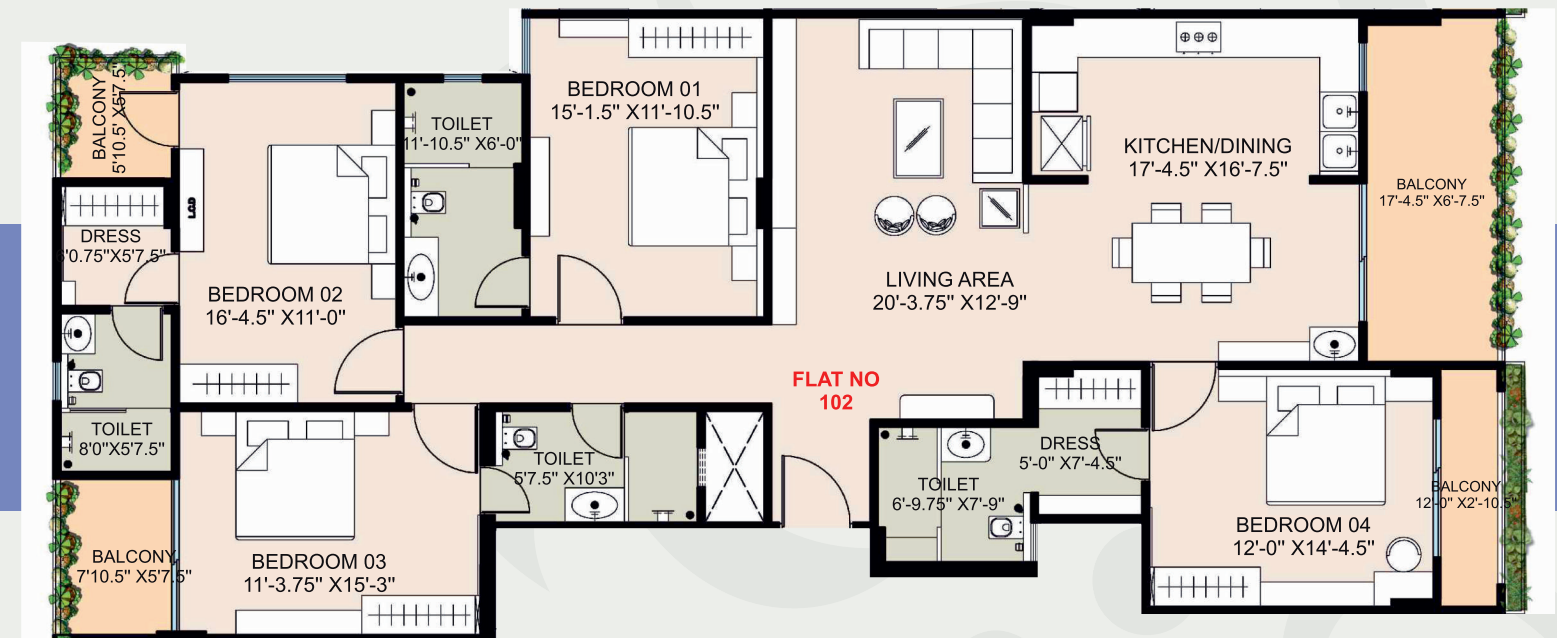
Flat No.	Built-Up Area	Super Built-Up Area
101-401	2056.00 SQ. FT	2775.6 SQ. FT
102-402	1995.00 SQ. FT	2693.25 SQ. FT
103-403	1996.00 SQ. FT	2694.6 SQ. FT
104-404	2038.00 SQ. FT	2751.3 SQ. FT

Flat No.	Built-Up Area	Super Built-Up Area
601	2056.00 SQ. FT	2775.6 + 500= 3275.6 SQ. FT.
602	1995.00 SQ. FT	2693.25 + 500= 3293.25 SQ. FT.
603	1996.00 SQ. FT	2694.6 + 500= 3194 SQ. FT.
604	2038.00 SQ. FT	2751.3 + 500= 3251.3 SQ. FT.





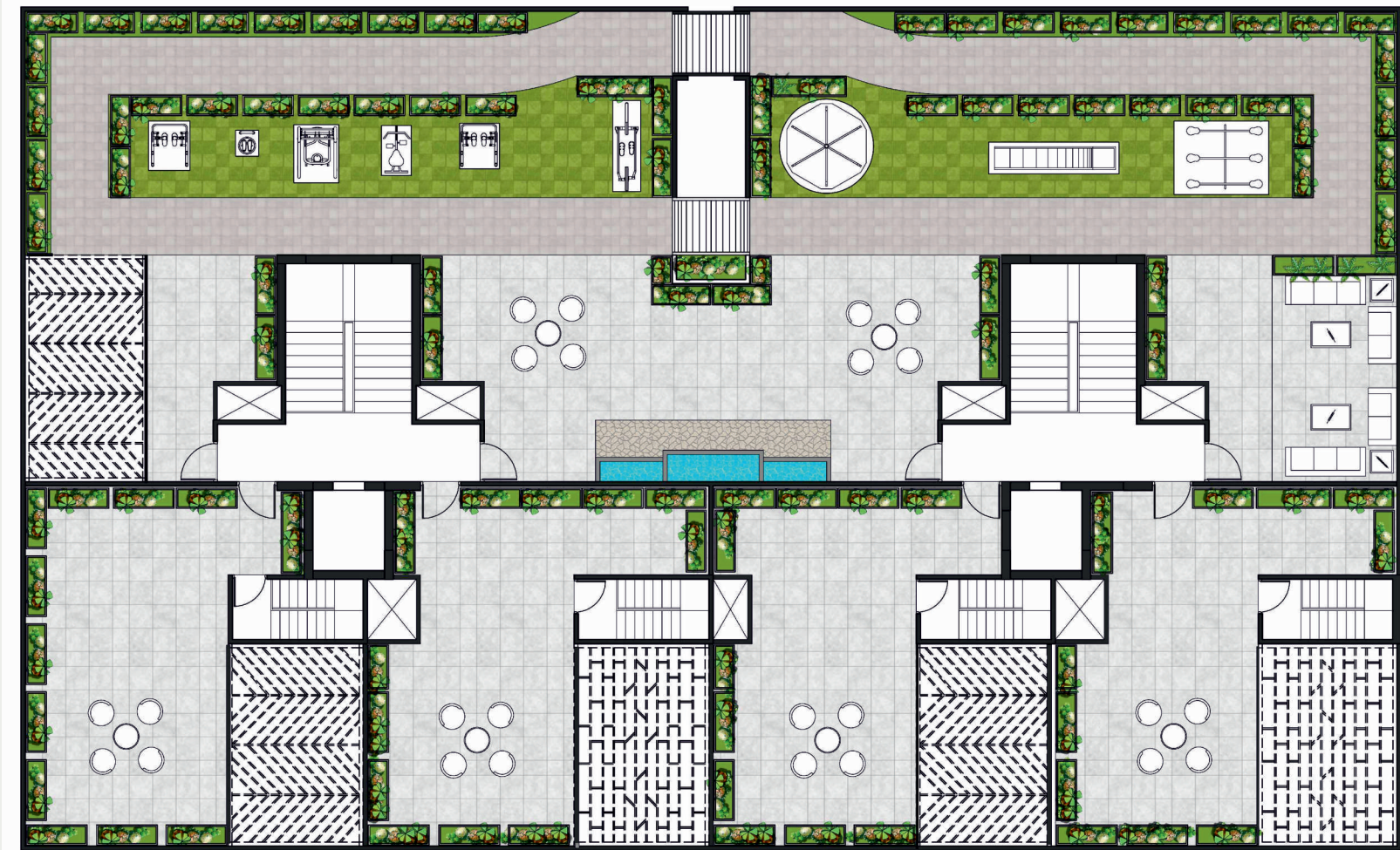
**4BHK FLAT NO 101-401**  
**BUILT UP AREA=2056.00 sq. ft.**  
**SUPER BUILT UP AREA=2775.6 sq. ft.**



**4BHK FLAT NO 102-402**  
**BUILT UP AREA=1995.00 sq. ft.**  
**SUPER BUILT UP AREA=2693.25 sq. ft.**



# Stilt Floor Plan



## Amenities

1. Decorative Sofa Set In Drawing Hall ( With Center Table)
2. 6 Seater Dining Table In Dining Hall
3. Designer Wooden Tv Concole In Drawing Hall / All Bedrooms
4. Wooden Temple In Each Flats
5. Decorative Fans In Drawing & Dining Hall / Bathrooms
6. Decorative Jhoomer in Drawing & Dining Hall
7. False Ceiling in Drawing/Dining Hall / All Bedrooms
8. Down Lights All Bedrooms, Coblights in Drawing / Dining Hall / Balcony's
9. Curtains In Drawing, Dining Hall & All Bedrooms
10. Designer Wall Paneling in Drawing/Dining Hall
11. VRV Central Air Conditioning System (Daikin)
12. Wooden Shoe Cabinet In Each Flats
13. All Bedrooms in Bed with side Table
14. Wooden Wardrobe in All Bed Rooms





## Rooms

1. Furnished Wooden Wardrobe in All Bedrooms With Both Side Laminate Finished
2. POP & False Ceiling In All Bedrooms
3. Designer Beds With Both side Mica In All Bedrooms
4. Mattress, Pillow & Bad sheets In all Bedrooms
5. Fans & Ceiling lights In All Bedrooms
6. Curtain In All Bedrooms
7. VRV Central Air Conditioning System(Daikin)
8. Big Size Digital Tiles In All Bedrooms
9. Any One Room Tea Table Set in Balcony

## Kitchen

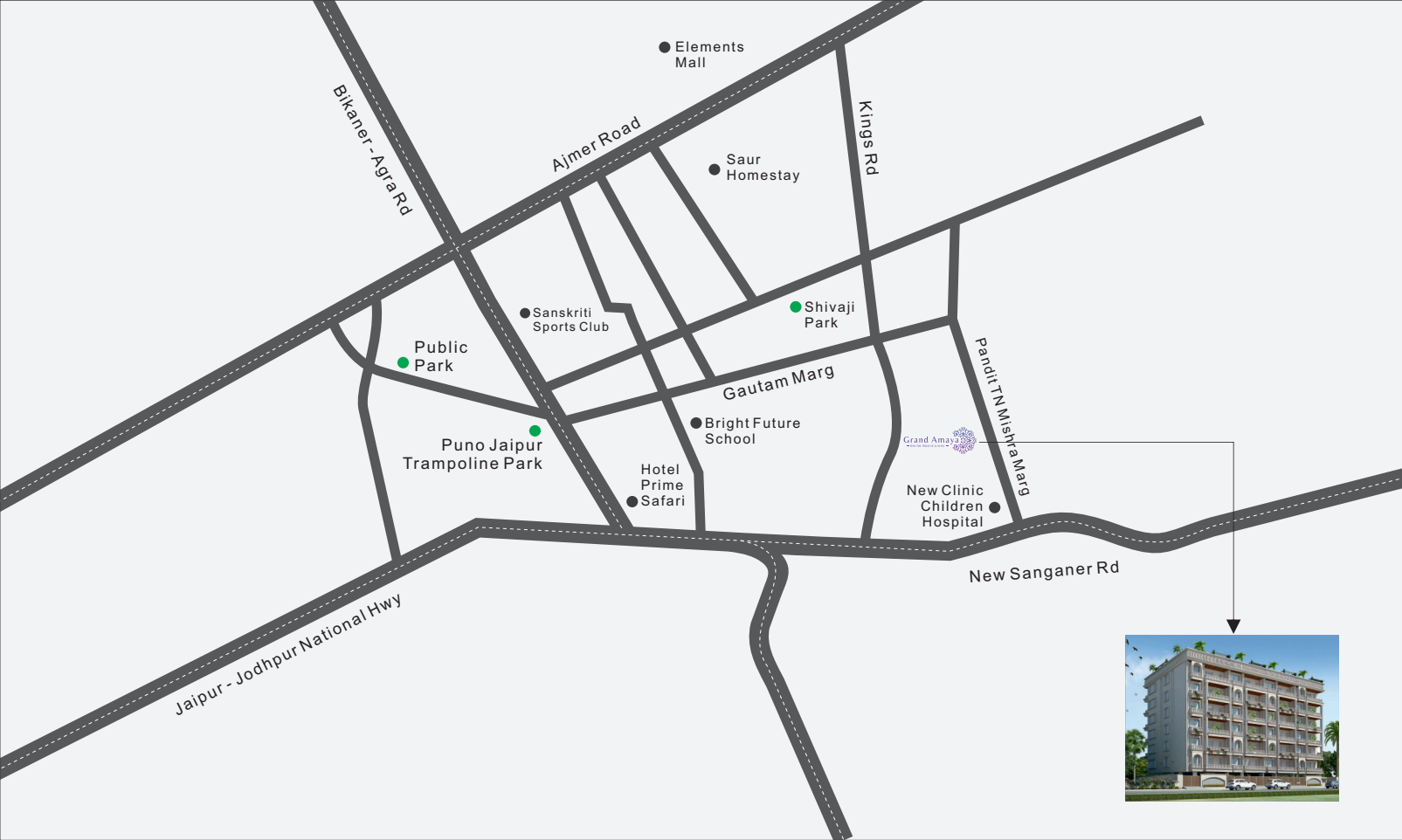
1. Quartz Tiles Counter Top And Ceramic Tiles Up To 2' Height
2. Fully Modular Kitchen With Chimney and Double S.S. Sink
3. Instant Geyser
4. Fans & Ceiling lights
5. Water Purifier
6. Microwave and Otg Oven
7. Hope
8. Wooden Cabinet Full Height

## Toilets

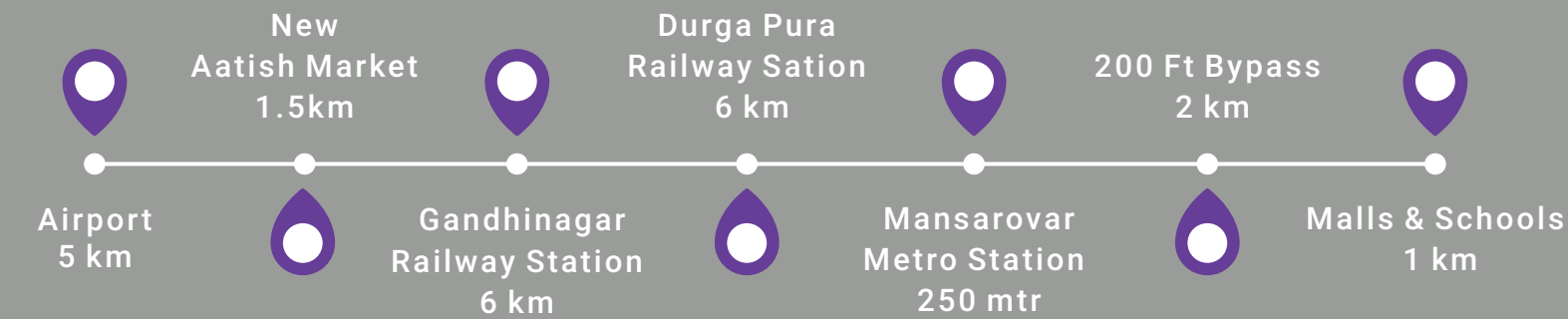
1. Designer Tiles
2. Anti Skid Ceramic Tiles In Flooring
3. Premium C.P. Fitting In Jaquar
4. Premium Wall Hung W.C. With Concealed Cistern Tank In All Toilets (Jaquar)
5. Single Lever Diverter For Bath And Shower
6. Body Shower in one Bathroom.
7. Ceramic Tiles In Toilets Up To 8' Height
8. Counter Washbasin In All Toilets
9. Geyser In All Toilets 15 Ltr.
10. Exhaust Fans In All Toilets
11. Glass Partition (Jaquar)







### LOCATION ADVANTAGES



A Project By



### ENVISION HEIGHTS

**Site Add:** Envision Heights, 47, 46 . 46-A, West Part & 46-A East Part,  
Rail Nagar, Kings Road, Mansarovar, Jaipur, Rajasthan - 302020

**Rera Number:** RAJ/P/2025/3628

Scan QR for Location



**Disclaimer :** The brochure is purely conceptual and is not a legal offering nor will it be part of any binding document. All furnishing shown on all floor plans are for illustrative purpose only, the developer reserves the sole rights to amend the number of floors, number of units, layout plans, elevation, color, schemes, specifications and amenities etc. without prior notice. All dimension are approximate and subject to construction variances and approvals.